

MADJAX

Installation Instructions for: **LED ULTIMATE LIGHT KIT PLUS #02-097** **LED LUX LIGHT KIT #02-106**

Will fit Club Car® Tempo



ITEMS INCLUDED

Headlights
Tail Lights
Wiring Harness
Mounting Hardware
48-12v Converter
Turn Signal Indicator
Hazard Switch
Control Box
Horn
Brake Switch
USB Charge Port
Column Cover
RGB Module (02-106)

TOOLS NEEDED

Rotary Cutting Tool
Sandpaper
Power Drill
15/32" Drill Bit
1-1/8" Paddle Bit
Torque Bit Set
Wire Snake

Control box features:

- 30 second turn signal timer
- Eliminates flashers/ Relay
- Brake Lights Automatically turn off after 3 minutes of setting parking brake.

RGB Module controlled by
Happy Light App



©2017 MADJAX LLC

We recommend professional installation. If you choose to not have this product installed by a professional, we highly recommend that you exercise caution, care, and patience when installing this product.



Important: Any modifications made to the wiring harness or lights in this kit will void the warranty. Any damages that occur to the kit or cart will be the sole responsibility of the installer.

ATTENTION: The Instructions for this Ultimate Plus Light Kit & LED LUX Light Kit are identical

STEP 1

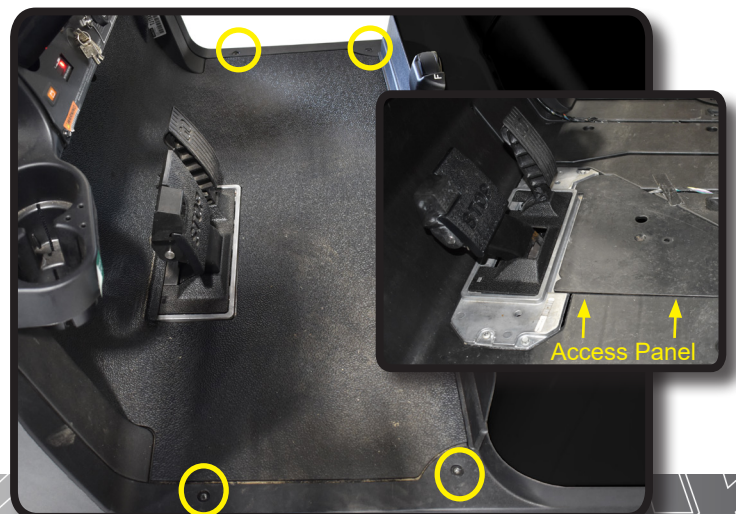
Switch key to OFF position. Place TOW/RUN switch to TOW. It is not required to remove the batteries but you do need to disconnect the main negative.



STEP 2

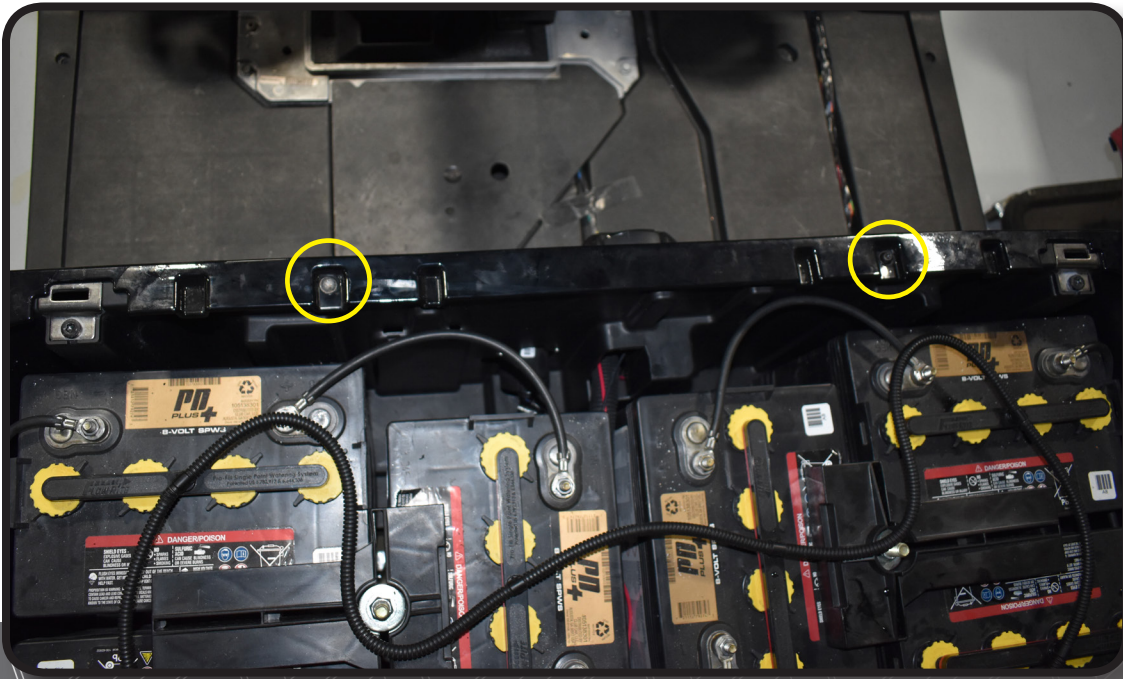
Remove all screws securing floor mat to the vehicle. Retain hardware. Remove floor mat.

Remove the brake adjustment access panel.



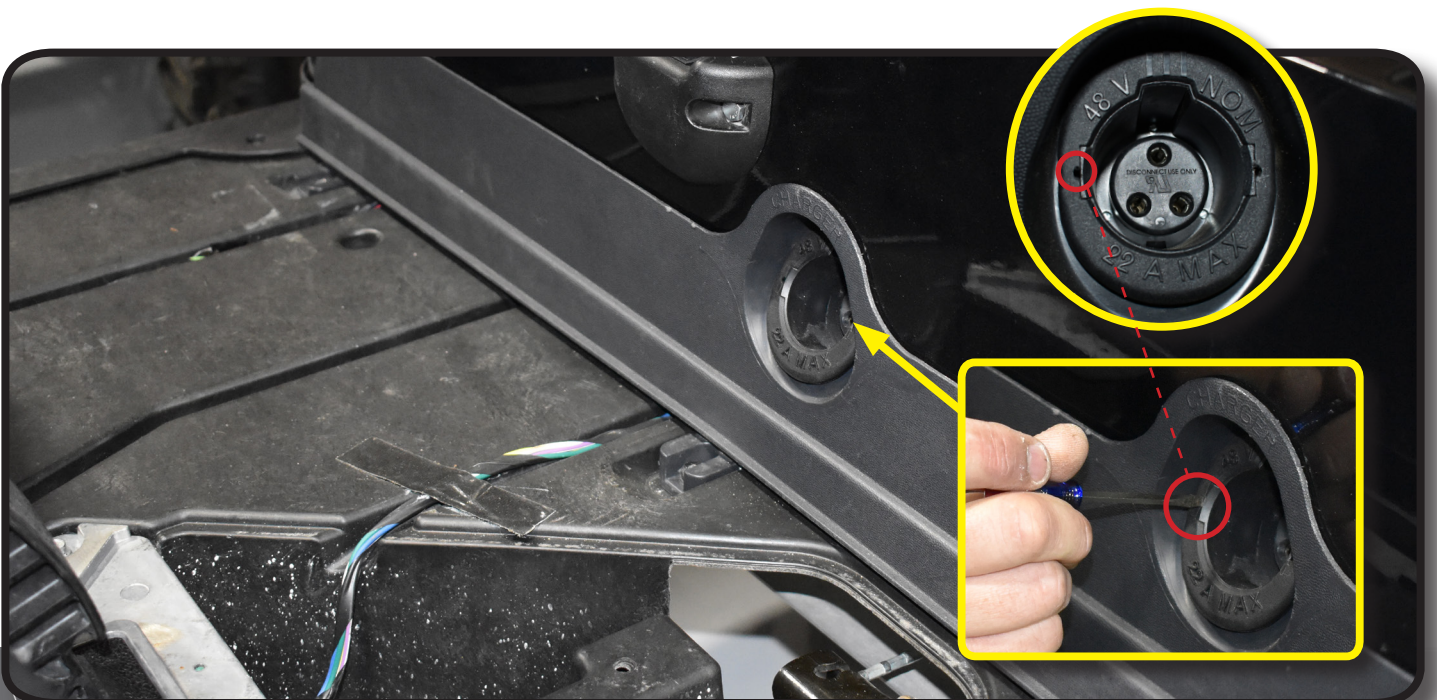
STEP 3

Remove and retain the front body screws.



STEP 4

Using a small screwdriver, pry charge receptacle cover from vehicle.



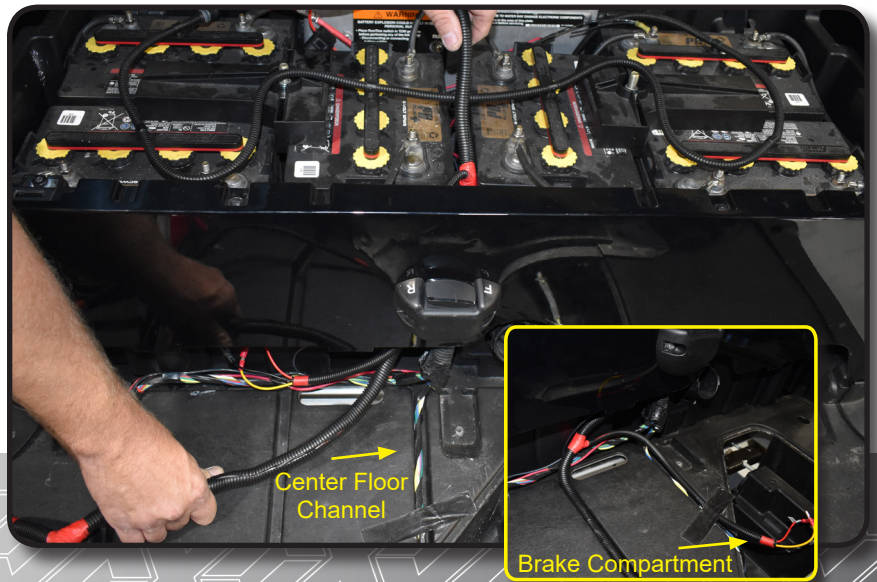
STEP 5

Remove the screws securing the lower body trim to the body. Retain hardware. Remove the lower body trim.



STEP 6

From the battery compartment, route the Brake Light connectors through the center floor channel that leads to the brake compartment.



STEP 7

Remove and retain the instrument panel screws.

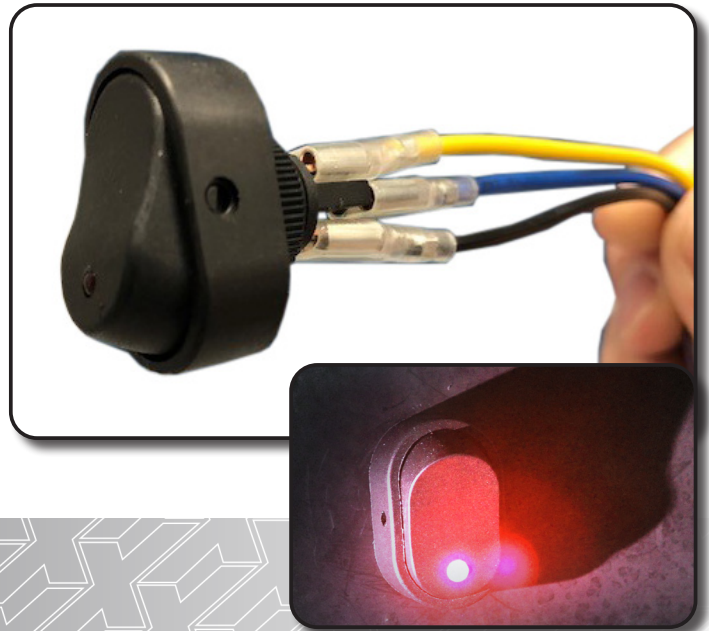


STEP 8

Hazard Switch Install

Find a desired location on your dash to mount the hazard switch. Ensure the location is free of obstacles and will not affect dash reattachment. Using a 15/32" bit, drill a mounting hole and insert switch into dash. Secure with the ring nut from back of switch.

Reattach wires: Black wire behind led, Blue on center post, and Yellow on top post.



STEP 9

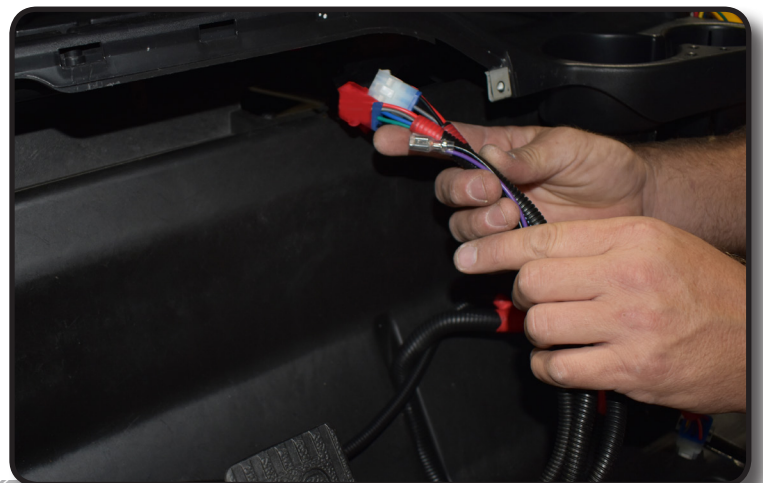
Plug 12 Pin connector of the turn signal module to the light kit harness.



STEP 10

Route the two headlight connectors through the opening behind instrument panel to the front. (For RGB kits there will be two additional 2 pin connectors to route through the opening as well).

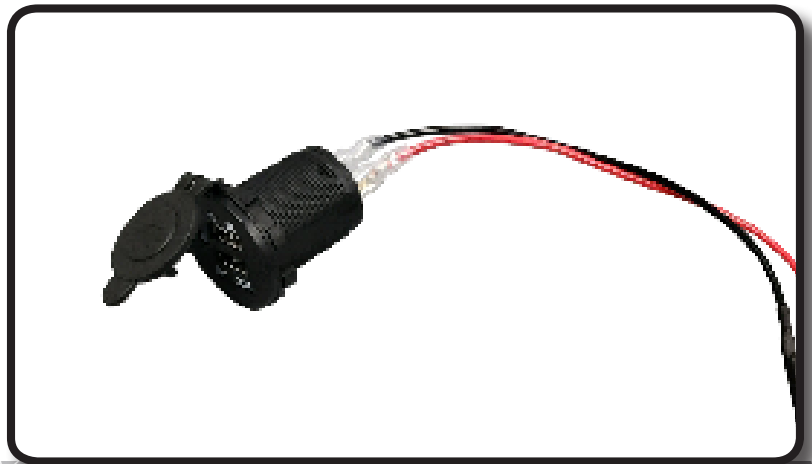
NOTE: Red connector is for the Passenger Headlight.



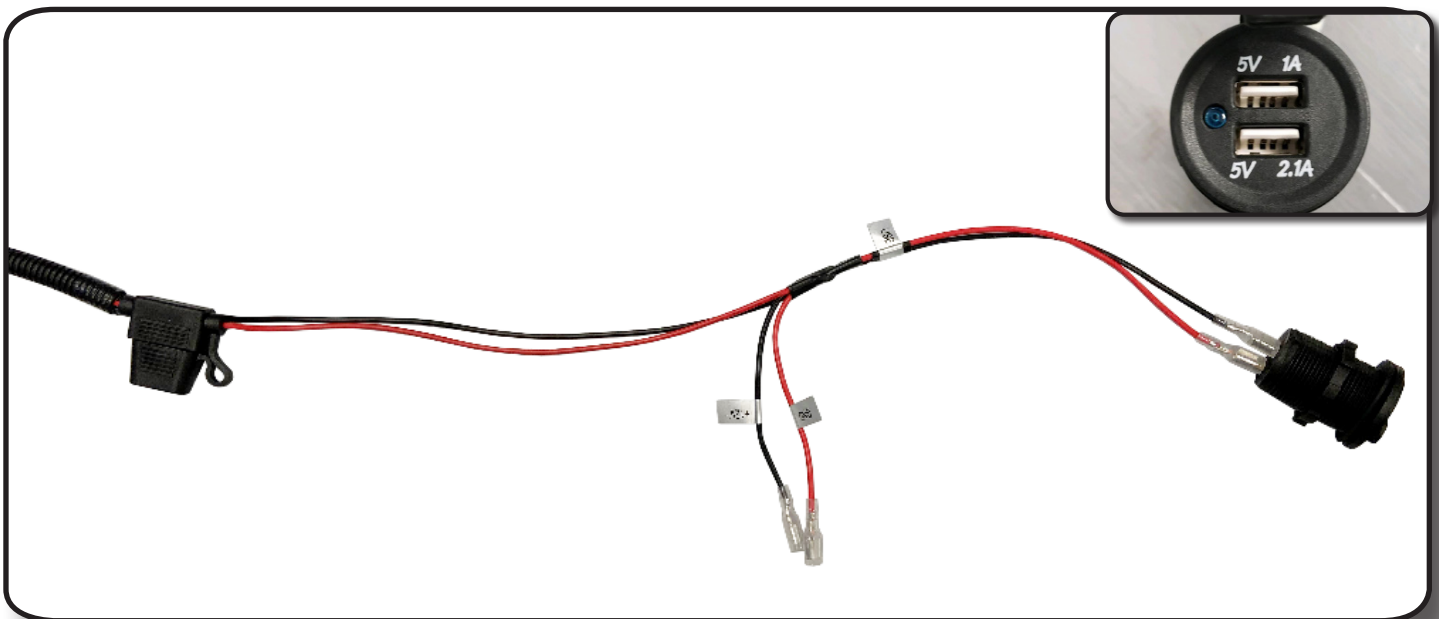
STEP 11 *USB Charger Install*

Using a 1 1/8" Paddle Bit, find a desired location on your golf cart dashboard to mount your USB charger. Ensure your location is free of obstacles and will not affect dash reattachment.

NOTE: If you do not have access to a 1 1/8" Paddle Bit you can use the inside of the retaining nut as a template.



STEP 12



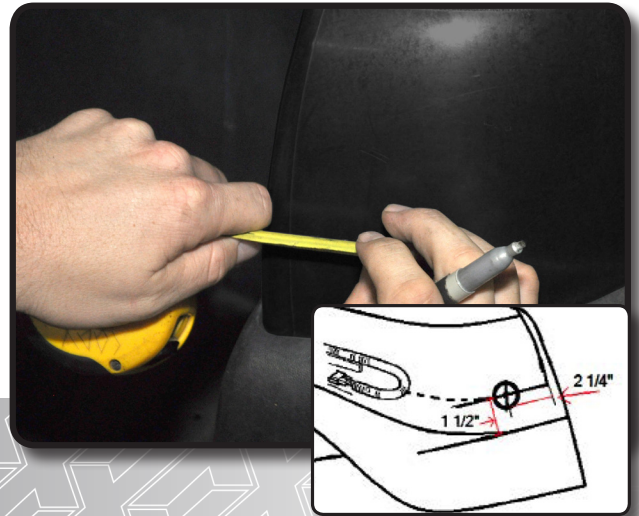
Using the supplied ring nut, mount the charger in the to your cart.

Plug the red and black 12 volt accessory connection from the light kit harness to the spade terminals on the back of the charger, red to (+) and black to (-).

NOTE: Secondary connector can be used to supply power to another 12 volt accessory with less than 7.5 amp draw.

STEP 13 *Tail Light Install*

Mark the center of the taillight hole using the drawing below, then using a 1-1/2 inch hole saw, drill a hole in the location as shown in drawing. Sand hole to remove sharp edges. Before removing double sided tape and installing the LED Tail Lights, test fit them in their position on the rear location of the vehicle.



STEP 14

Route tail light wires through upper rear corners of Battery Compartment ensuring that tail light connector with yellow wire is on the passenger side with Red connector. Now using a wire snake, pull the tail light connector through the hole in the rear body.



STEP 15

Connect the tail lights to the vehicle tail light wiring harness. Remove the double sided tape from the back of the tail light and mount to the rear body using screws provided.

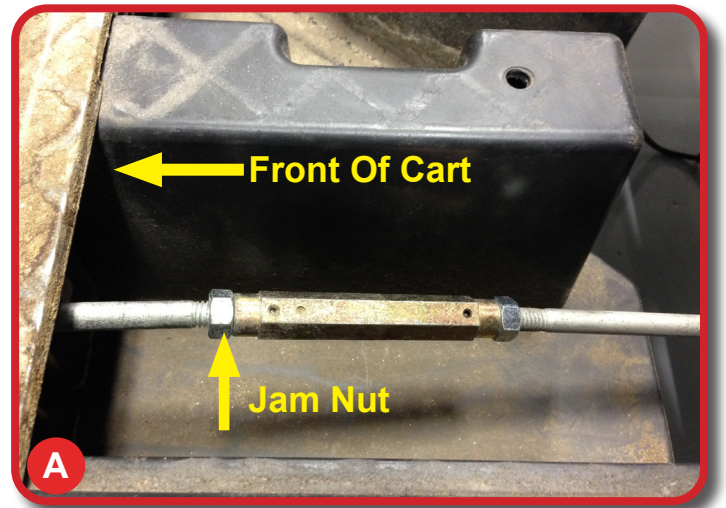
*Repeat process on opposite side.



STEP 16 *Brake light Install*

NOTE: Disengage Brake before installation.

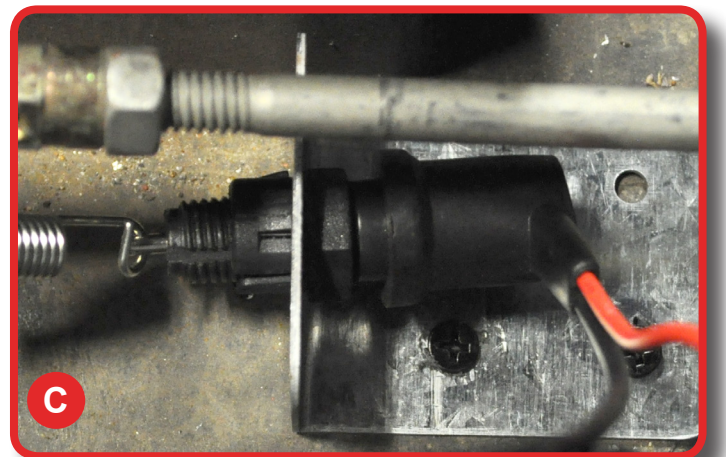
A) Loosen Jam nut on brake rod. Place the forked bracket around the brake rod behind the Jam nut and tighten the Jam nut sandwiching the bracket. Place the brake switch on the floor of the car with the spring running towards the back of the car to the brake switch.



B) Adjust the brake switch so that the spring has no slack but the switch is not engaged. Screw the brake switch to the floor of the car with self tapping screws.



C) Plug the 2 bullet connectors from the brake switch into the corresponding bullet connectors on the light kit harness. Secure all wiring so that it is away from moving parts.



STEP 17

Mount Turn Signal Indicator assembly using clamps provided and tighten. Run Turn Signal Indicator harness along steering column and insert harness through dash.

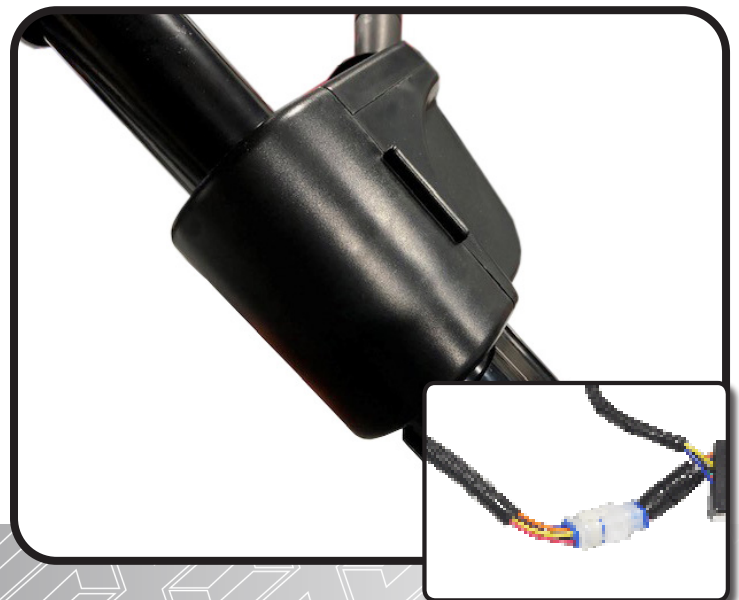


STEP 18

Attach turn signal back cover to turn signal assembly.

Attach column cover to steering column, secure harness in column cover void.

Plug in the 12 pin connector.

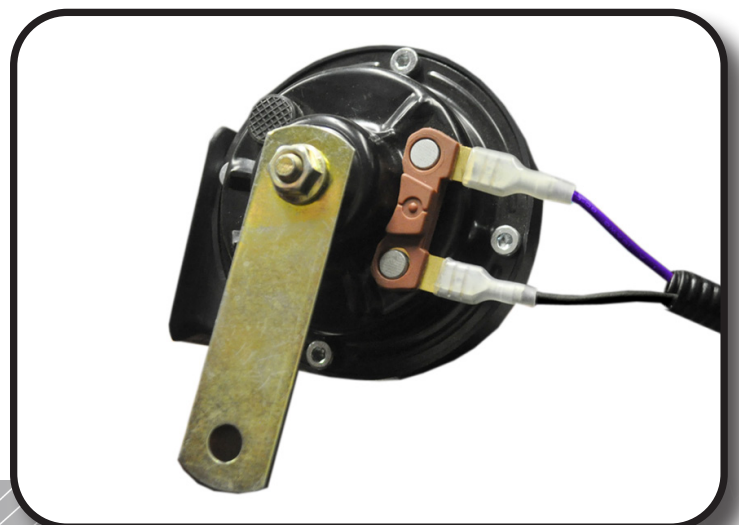


STEP 19

Attach horn to purple and black female spade connectors from front of harness and secure horn to metal framework under front cowl with a self tapping screw.

NOTE: Horn is operated at the Turn Signal Assembly.

**Wires have no orientation and will work on either post.*



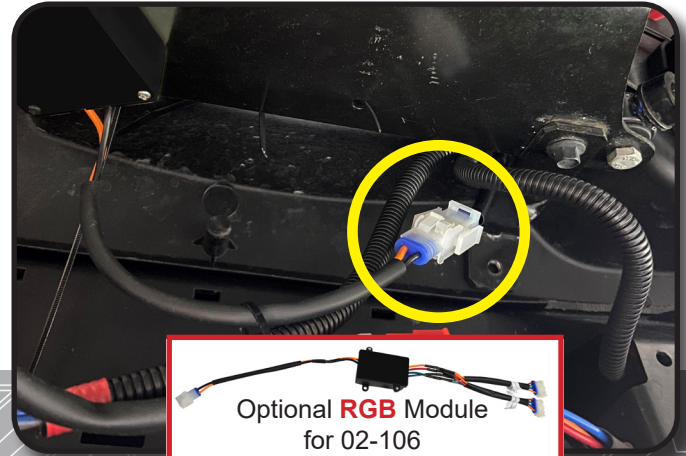
OPTIONAL RGB MODULE INSTALL FOR 02-106 TEMPO LUX LIGHT KIT

ATTENTION: For Ultimate Plus Light Kit Instructions (02-097), Skip to Step 20.

To access the features of your RGB Module download the Happy Light App and follow the provided instructions.

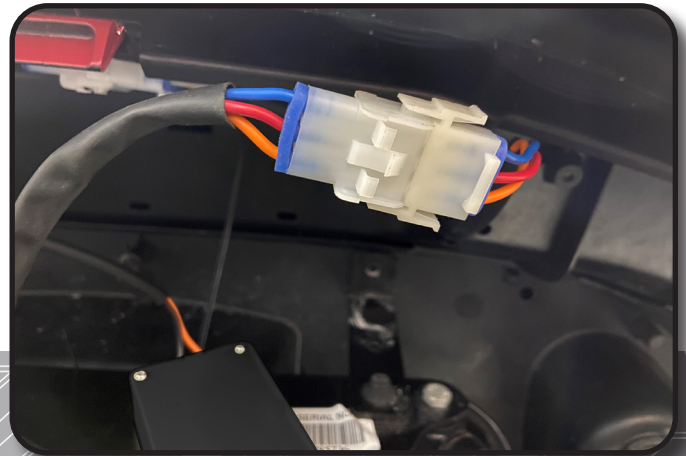
STEP A

At the front of the car connect the 2-Pin connector from RGB Module to the Main Harness.



STEP B

Plug 3 Pin Connector from RGB Module to 3-Pin on Headlight.



STEP C

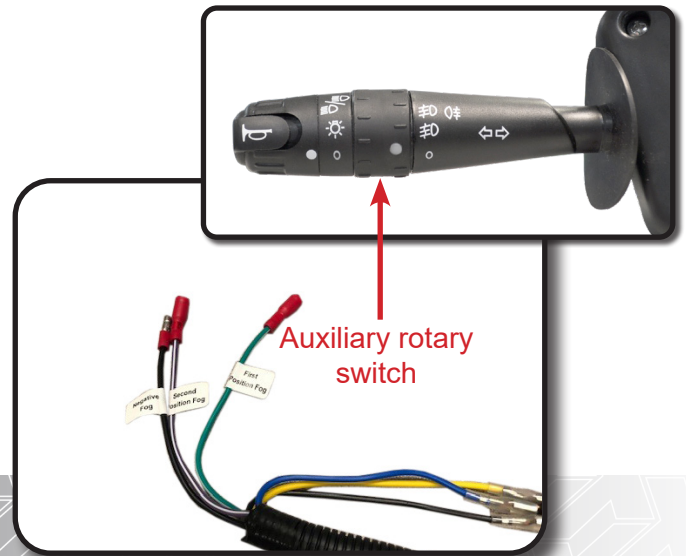
Connect the 4-Pin connector from Main Harness to 4-Pin Connector on Headlight.



OPTIONAL RGB MODULE INSTALL COMPLETE

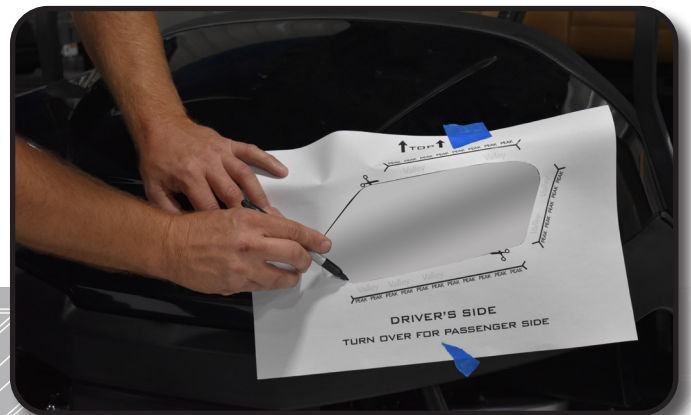
STEP 20 *Auxiliary Switch Feature*

The turn signal handle has a secondary, 2-position rotary switch for auxiliary 12 volt lighting such as fog lights and/or LED light bars. There is one common negative wire and two positive wire connections to run two different auxiliary lights. Additional wiring and lighting not included. Reinstall dashboard using retained hardware from Step 7.



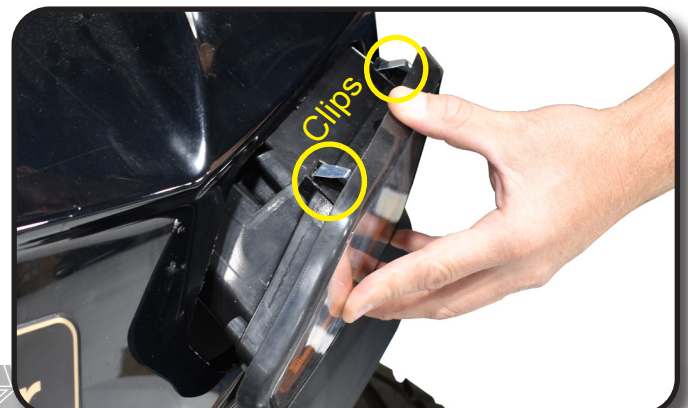
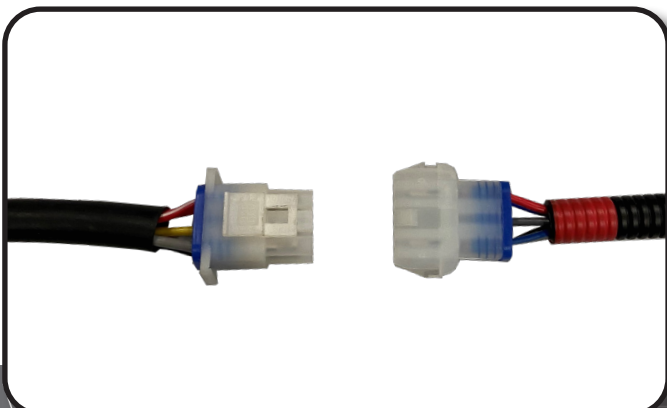
STEP 21 *Headlight Install*

Cut out center of the supplied template. Align using the reference points on template, mark and cut to the inside of the marking. Some trimming may be necessary to fit light.

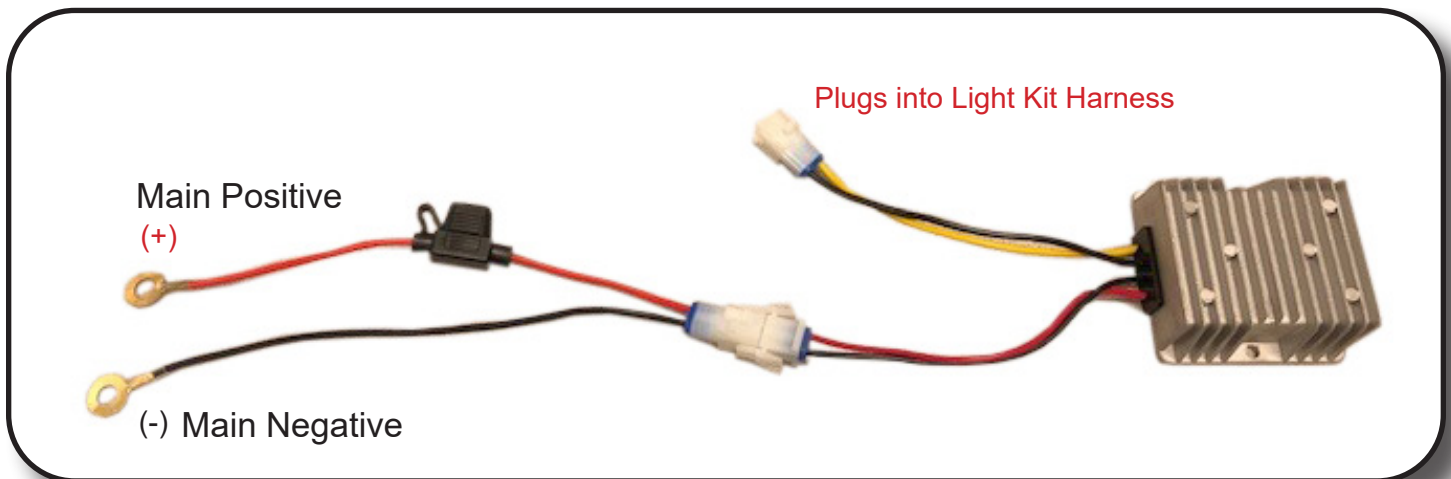


STEP 22 After checking if the headlight fits properly, connect headlights to the harness. Insert the headlight bottom first into the hole, push headlight in making sure clips engage the body completely.

*Red Connectors go to the Passenger side lights.



STEP 23



The voltage converter included must be used on all carts electric and gas. Connect the red wire with the fuse to the main positive terminal of the battery pack. Connect the black wire to the main negative terminal of the battery pack and tighten hardware.

Mount the converter to a flat surface under the seat. (Metal area is preferred). Plug the connector with the yellow and black wire into the light kit harness (you will notice a small arc when connecting). Reconnect battery and place run/tow switch to run.

***Use converter on gas carts to prevent Starter Generator voltage spikes that could cause damage to accessories.**

STEP 24

Now that power is connected check brake switch operation. Make adjustments if needed by repeating Step 16. Replace Access Panel, Floor mat, running boards, and Charger Port Panel using retained hardware. Return RUN/TOW switch to RUN position. Replace seat bottom.



INSTALLATION COMPLETE