



02-112

Economy Light Kit

Will Fit Club Car® Tempo®
Installation Instructions



INCLUDED

Front and Rear lights
Wiring harness
Mounting Screws
Zip Ties
Rocker Switch

TOOLS NEEDED

T15 Torx Socket
T30 Torx Socket
T40 Torx Socket
Rotary Cutting Tool
Sandpaper
Power Drill
15/32" Drill Bit

Headlights



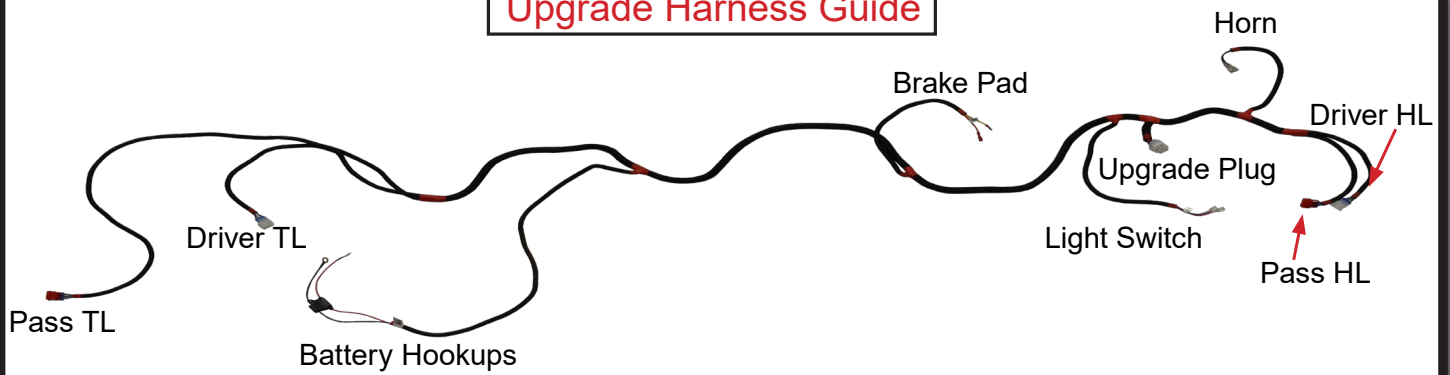
Tail Lights



Upgrade
Ready
Harness

We recommend professional installation. If you choose to not have this product installed by a professional, we highly recommend that you exercise caution, care, and patience when installing this product.


Upgrade Harness Guide



Switch key to OFF position. Place TOW/
RUN switch to TOW.


It is not required to remove the batteries
but you do need to disconnect the main
negative.



 Tools Required: T40 Torx Socket

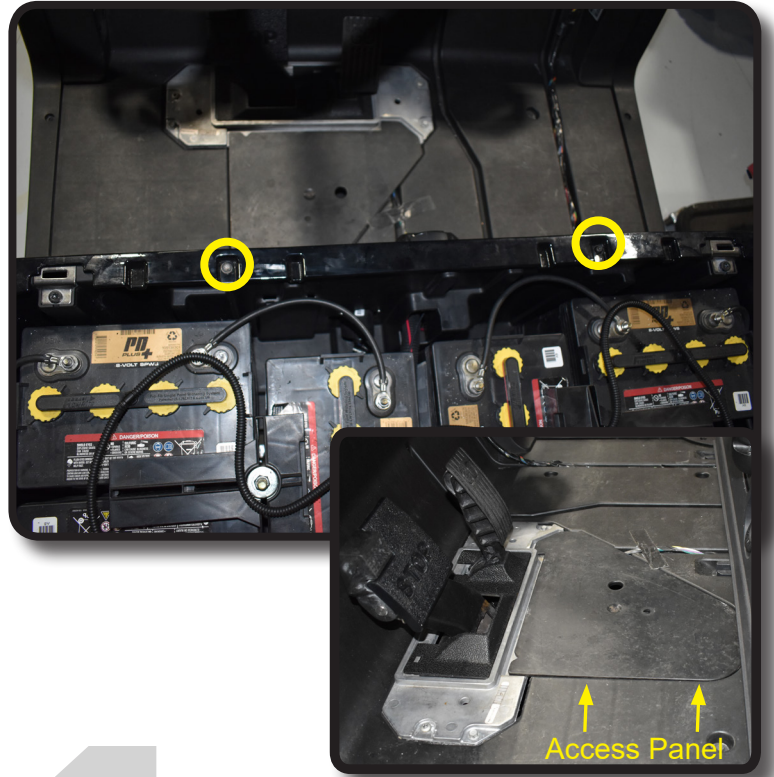
Remove all screws securing floor mat to
the vehicle. Retain hardware. Remove
floor mat.



 T30 Torx Socket

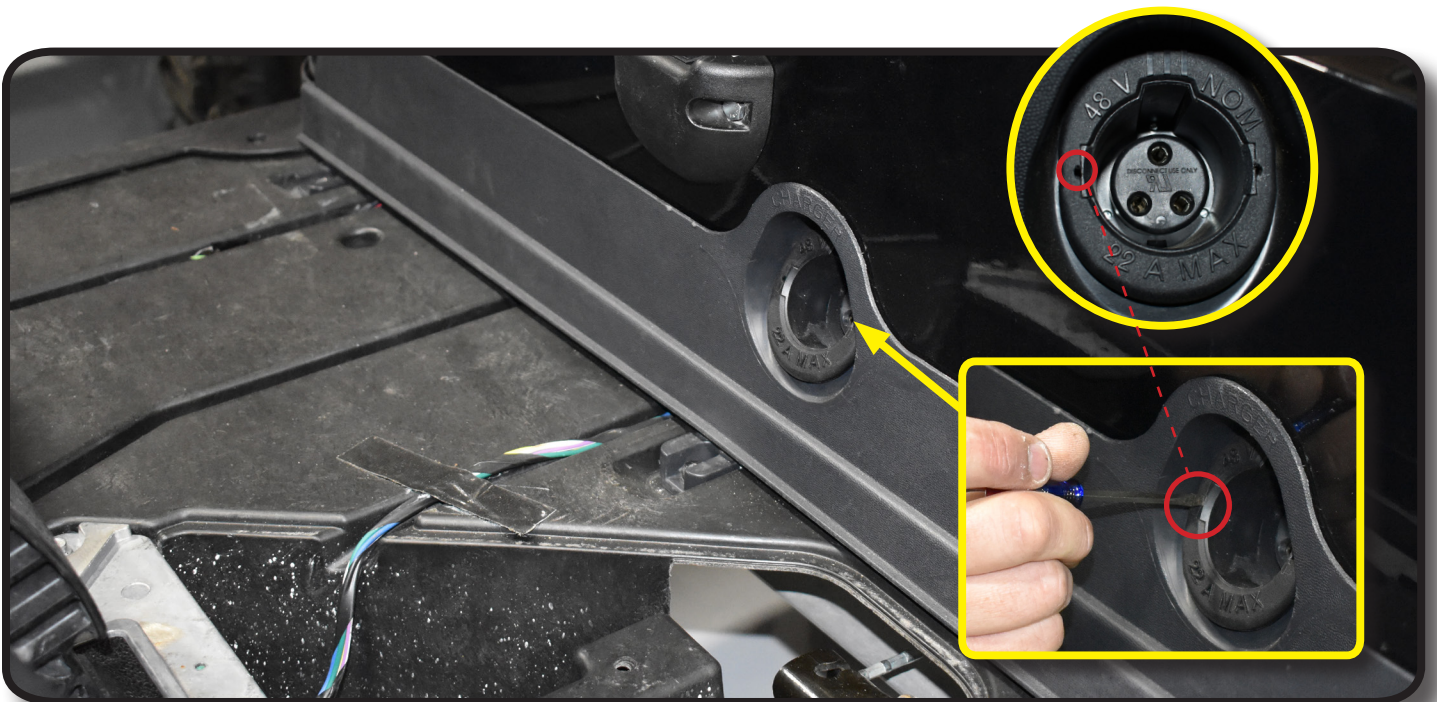
Remove and retain the front body screws shown.

Remove the Pedal Assembly access panel.



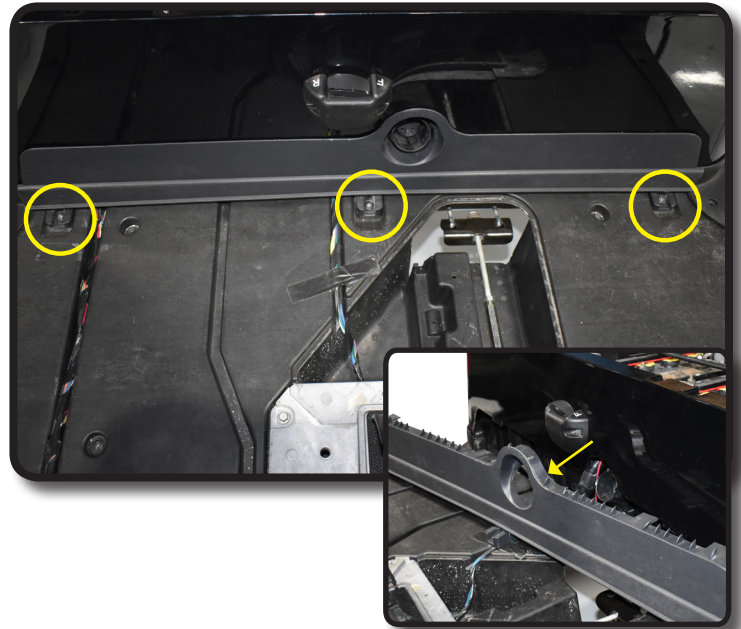
 Small Flat Head Screwdriver

Use the two indentations on each side of the receptacle cover shown to free from charge port and retain.



 T40 Torx Socket

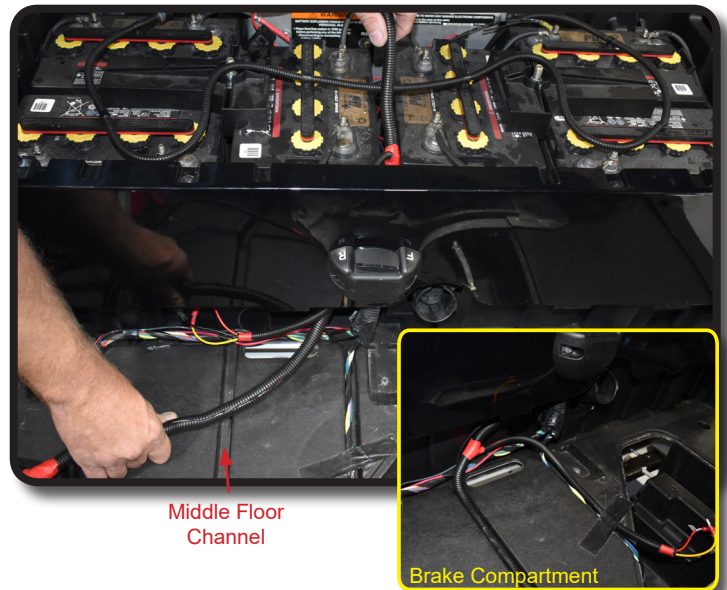
Remove the screws securing the lower kick panel trim to the body. Temporarily remove trim and retain all.



From the battery compartment, feed the front of the harness to the dash as shown. Lay harness loom in the Middle floor channel noted in picture.

Route the Brake Light connectors through the center floor channel that leads to the brake compartment.

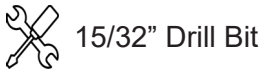
***Brake wires are only used with GTW Upgrade Kit.**



 T15 & T30 Torx Socket

Remove and retain the instrument panel screws shown.





Hazard Switch Install

Choose one of the factory marked indentations on either the left or right of the key switch as shown. Or find a desired location on your IP to mount the hazard switch. Ensure the location is free of obstacles and will not affect dash reattachment.

Using a 15/32" bit, drill a mounting hole and insert switch into dash. Secure with the ring nut from back of switch.

Note: Attach red & blue wires. There is no orientation for wire connections.

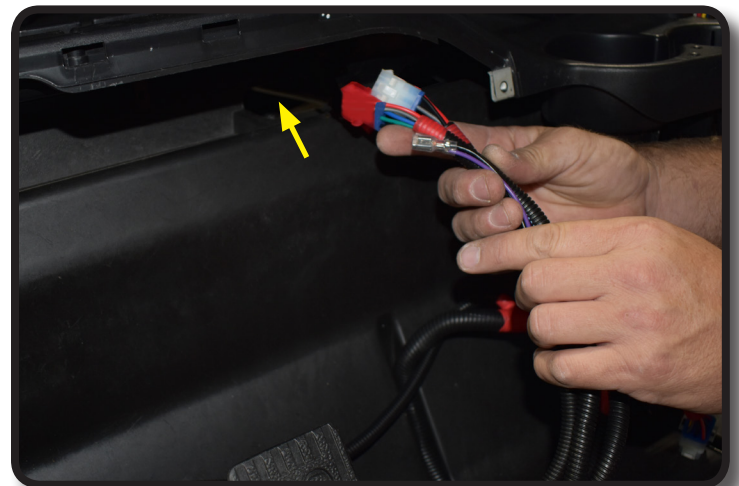
Route the two headlight connectors and purple/black horn wires through the opening behind instrument panel to the front. ***Horn wires are only used with GTW Upgrade Kit.**

NOTE: Red connector is for the Passenger Headlight.

If installing a GTW Upgrade Kit do so now using the instructions included with that kit.

Safely tuck remaining harness & 9 pin connector into dash area and reattach the instrument panel.

You can also reattach lower kick panel, Pedal cover, Charge port bezel, and floor mats using retained hardware.



HEAD LIGHT INSTALL



Scissors, Marker, Rotary Cutting Tool

Cut out center of the supplied template.

Align template to cowl using the reference points on template and trace light cut out with marker. Cut out head light hole using the **inside** of the marked line as a guide.

Some trimming may be necessary to fit light. Use sandpaper to smooth any rough edges.



After checking if the head light fits properly, connect the head lights to the harness.

Insert the bottom of the head light into the hole first, then push the top side in making sure mounting clips fully engage the backside of the cowl.

*Red 3 pin Connector goes to the Passenger side light.

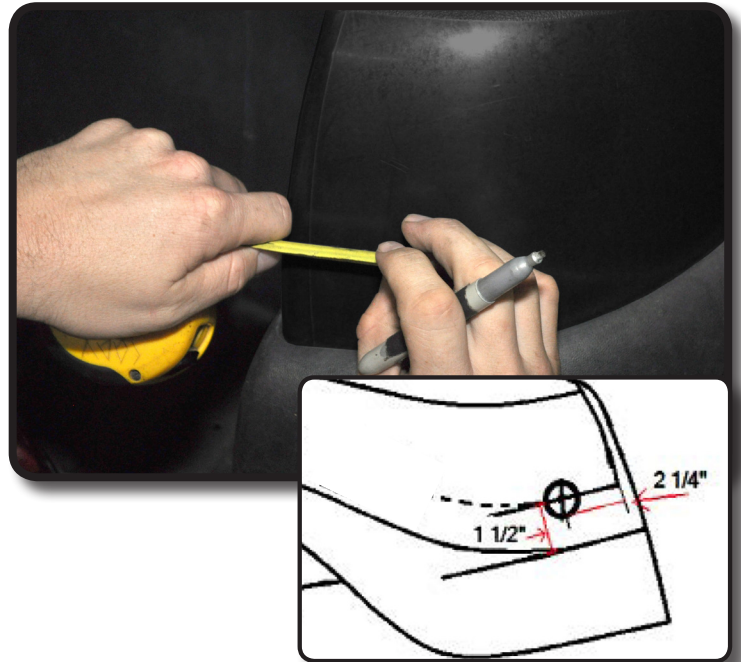


REAR TAIL LIGHT INSTALL

 Tape Measure, Marker, 1-1/8" Whole Saw

Mark the center of the taillight hole using the drawing below, then using a 1-1/8 inch hole saw, drill a hole in the location as shown in drawing.


Sand hole to remove sharp edges.



Route tail light wires through upper rear corners of Battery Compartment ensuring that tail light connector with Red connector goes to the passenger side.

Using a wire snake, pull the tail light connector through the hole in the rear body.



 #2 Phillips Tip

Connect the tail lights to the vehicle tail light wiring harness. Remove the double sided tape from the back of the tail light and mount to the rear body using screws provided.

*Repeat process on opposite side.



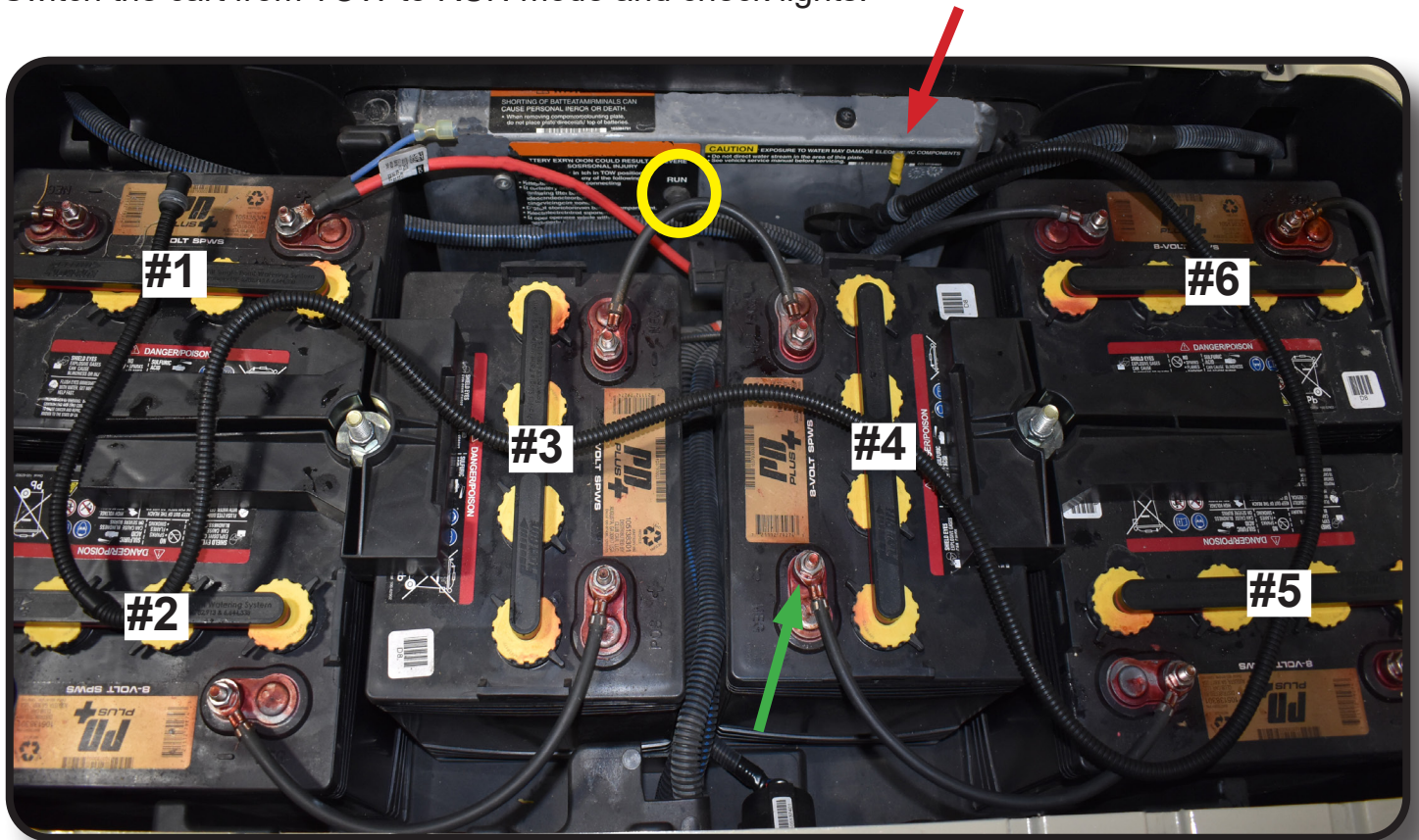
Club Car®, Precedent®, Tempo® and Onward® are registered trademarks of Ingersoll Rand, Inc. Reference to Ingersoll Rand's trademarks and products is solely for the purpose of identifying golf carts with which this GTW product is compatible. GTW products are aftermarket parts and are not original equipment parts. GTW is not connected, affiliated with, or sponsored by Ingersoll Rand® or Club Car®.

BATTERY CONNECTIONS

Ensure the cart is still in TOW mode (**yellow circle**). Locate the black wire (**red arrow**) coming from the On Board Computer (OBC) with the yellow female bullet connector behind Battery #4. Plug the black wire with male bullet connector from the light kit harness into the OBC wire.

Remove the nut from the Negative post of Battery #4 (**green arrow**) but do **NOT** remove the battery cable. Attach the red wire with ring terminal from the light kit harness to this Negative post and retighten nut. Do NOT hook the red wire to any post other than the Negative of Battery #4. Your light kit is now hooked to 16 volts, if you choose to use a Reliance voltage reducer or power converter follow the instructions included with that kit for installation.

Switch the cart from TOW to RUN mode and check lights.



FRONT OF CART

INSTALLATION COMPLETE